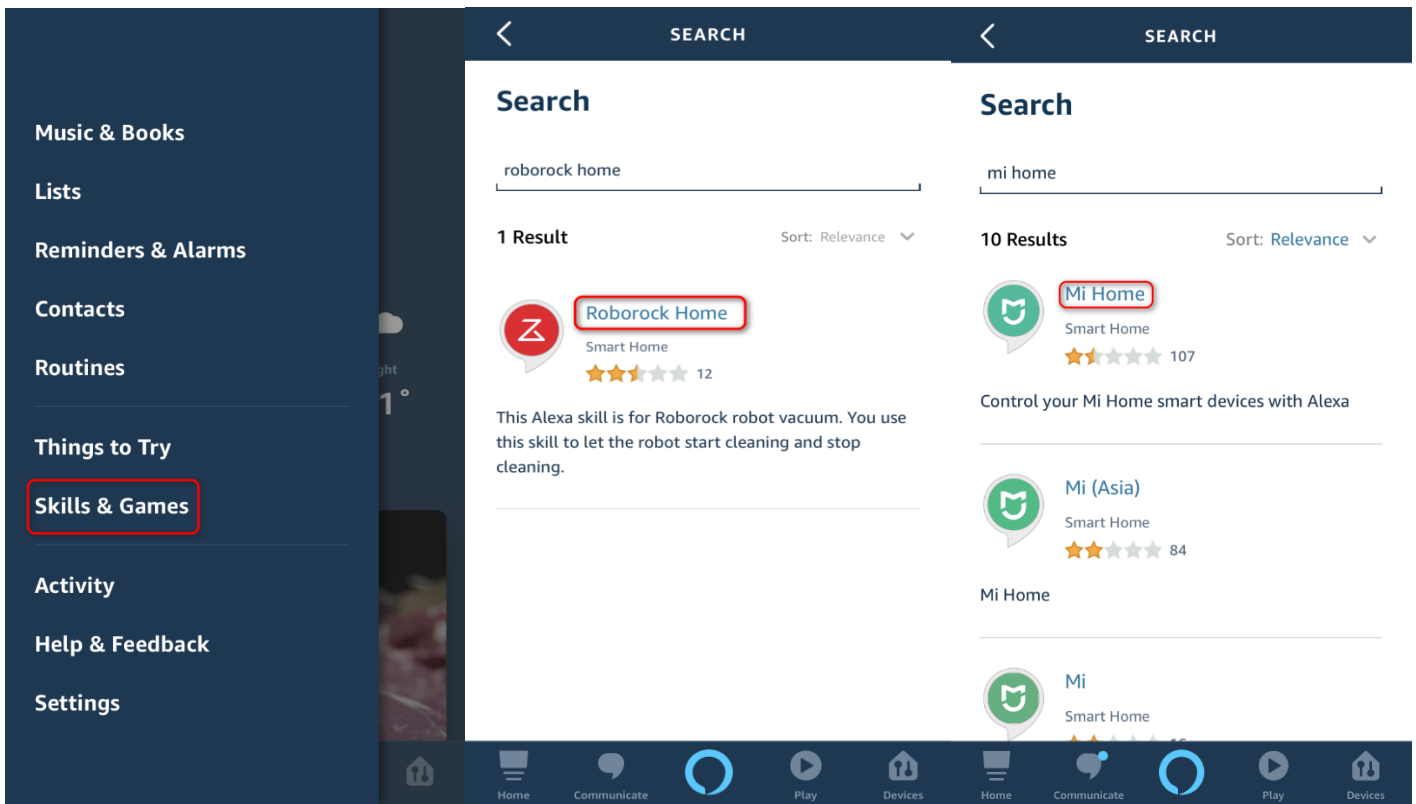


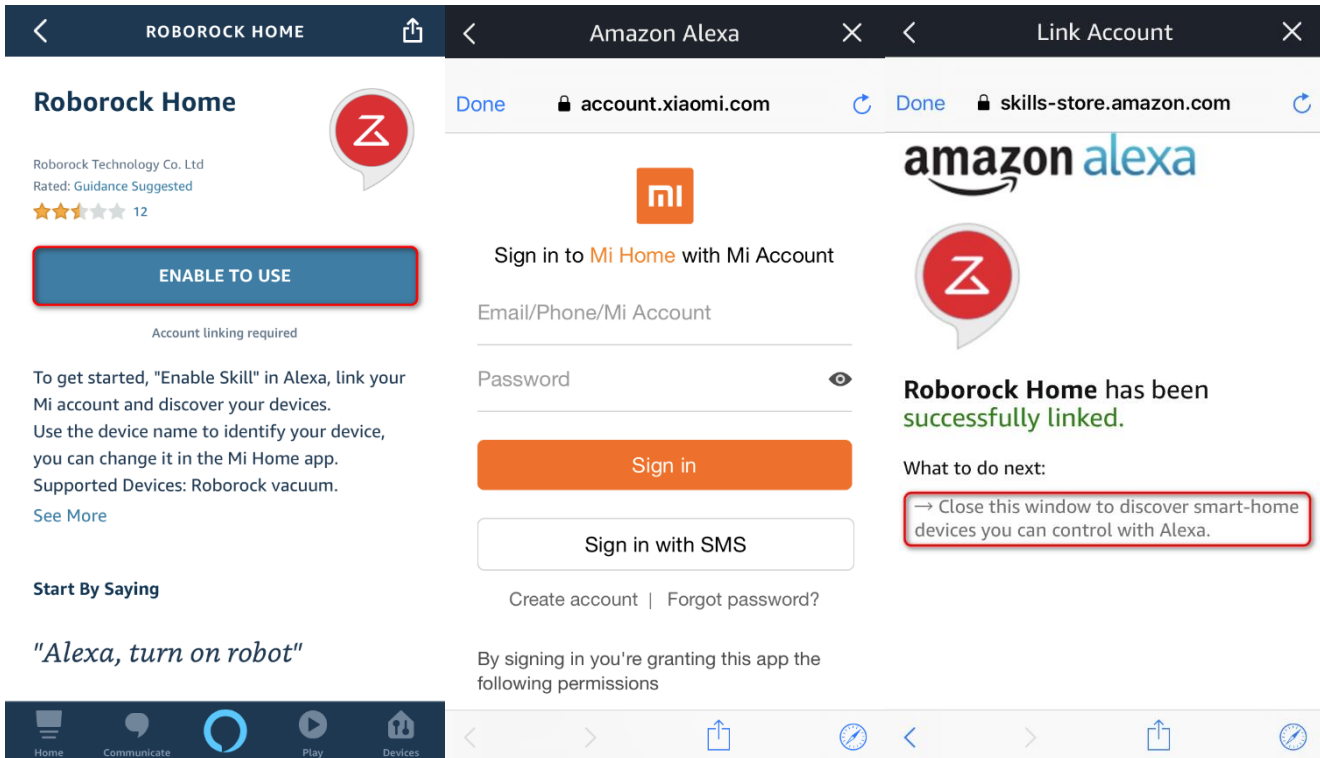
How do I use Alexa to control Roborock?

Note: Make sure your robot is added and online on app Mi Home first.

1. Go to "Skills & Games" then search for "Roborock Home" or "Mi Home" (both are OK)



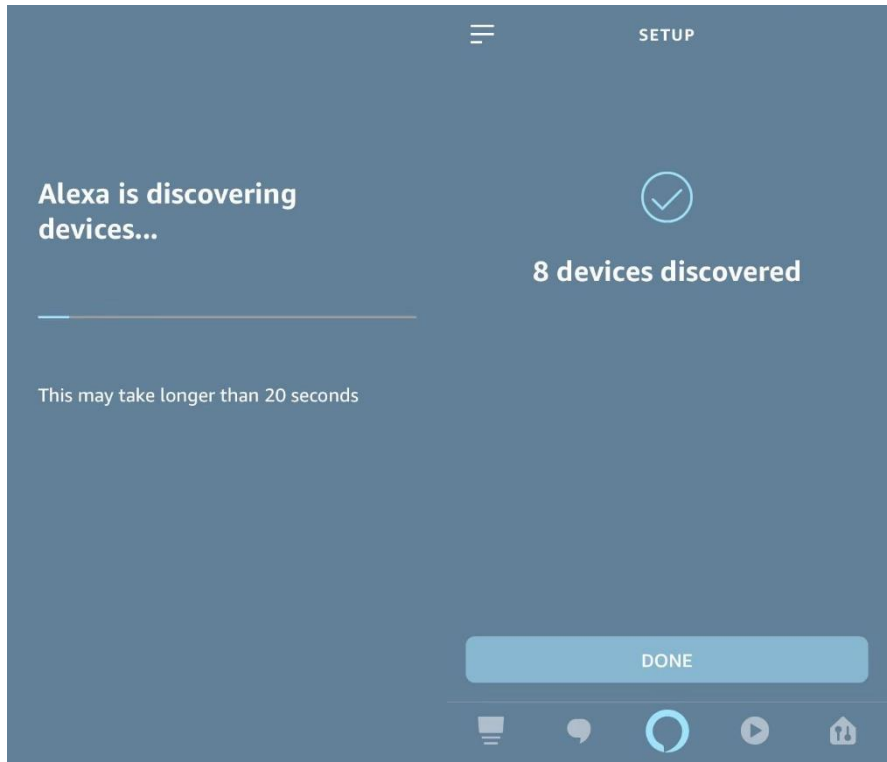
2. Link your Mi Home app to Alexa to discover devices in your Mi Home account that Alexa can control.



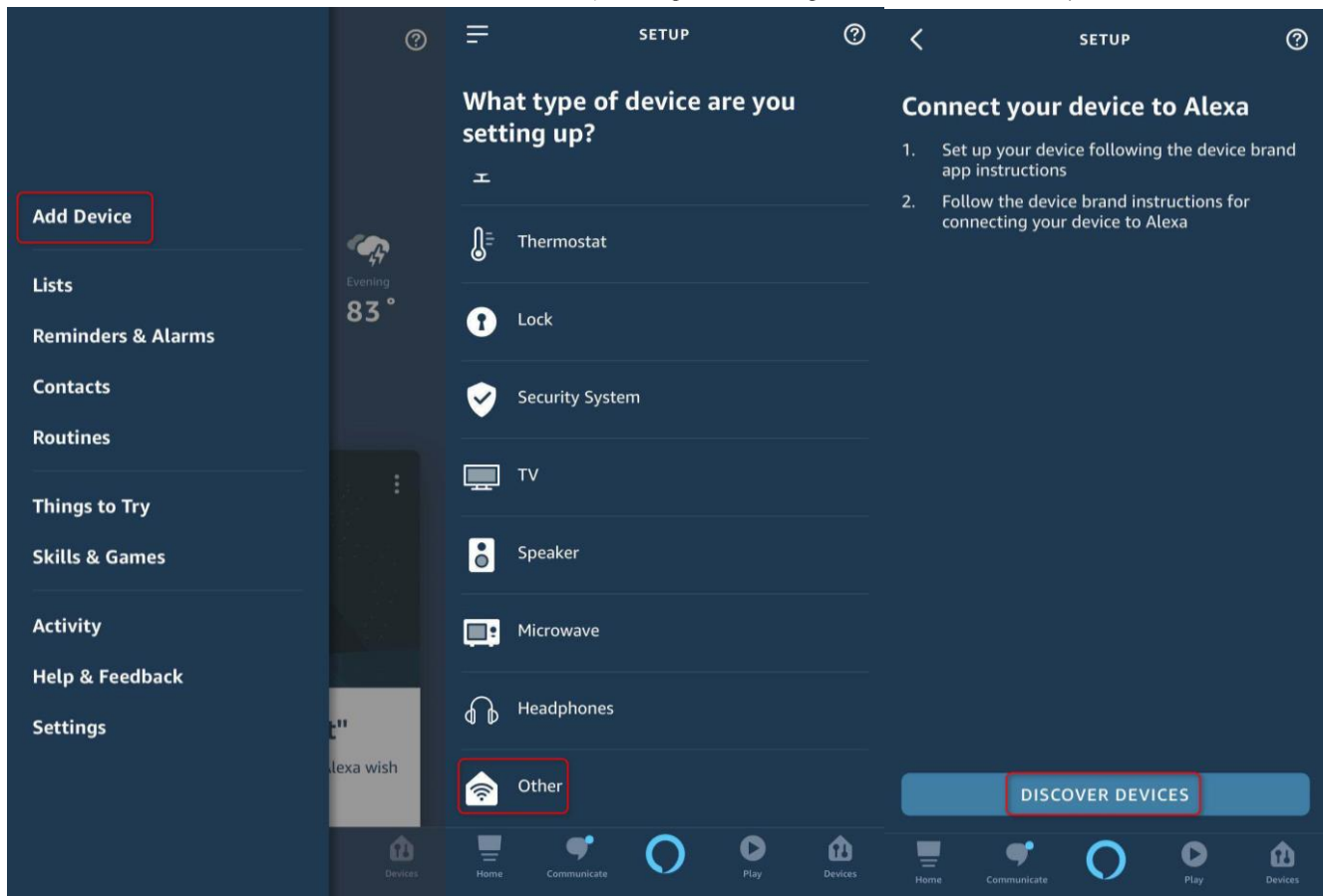
Discover Devices

Smart Home devices must be discovered before they can be used with Alexa.

CANCEL DISCOVER DEVICES



3. If Alexa does not show “discover devices” option, go to setting to discover manually.



4. Go to devices list and check if the robot appears and now you can use your Alexa smart speakers to start and stop cleaning.

Note: At present, Alexa smart speaker could only start and stop robot by skill Roborock Home or Mi Home.

